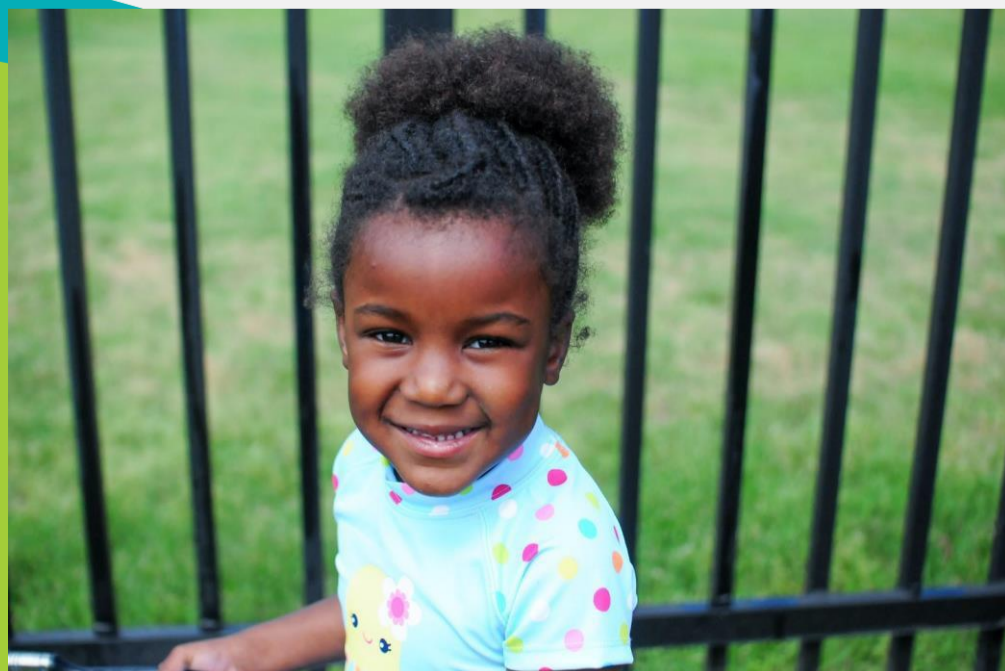


# Our approach to learning is simple. Let them **GROW!**

The purpose of Grace Fellowship Church Preschool Ministry is to teach young children to know and to love God and His Son, Jesus Christ. In doing so, the ministry of Grace Preschool will be an extension of Grace Fellowship Church's vision "to be a house of prayer for all nations."

## This will be accomplished through:

1. Providing an age and developmentally appropriate Christian curriculum;
2. Teaching each child to pray for herself/himself and others;
3. Leading each child to understand that he/she is uniquely created by God for His glory;
4. Teaching each child to respect teachers, peers and self with love and kindness; and,
5. Being loved, cared for and taught by teachers with a love for Jesus Christ and His children.



## OFFICE HOURS

8:30am-3:00pm  
Monday-Thursday  
Closed on Fridays  
*\*Summer Hours May Vary*

281.398.3412 (main)  
281.398.7441 (fax)



A place to  
**LEARN  
GROW  
SHARE  
& SUCCEED!**

GRACE FELLOWSHIP  
**PRECHOOL**



 **Grace  
Fellowship**

2655 S. Mason Road  
Katy, TX 77450  
281.646.1903  
[WhatIsGrace.org/Preschool](http://WhatIsGrace.org/Preschool)



# OUR CLASSES

Registration fees are payable to secure your child's placement in the class. These fees cover the costs of supplies and curriculum for the entire school year.

**All Toddler and Two's** have a maximum of 10 students with a Lead Teacher and a Teaching Assistant. *Staff to Child Ratio—1:5*

**All Three's and Four's** classes have a maximum of 12 students with a Lead Teacher and a Teaching Assistant. *Staff to Child Ratio—1:6*

**The Transition Class** has a maximum of 8 students with a Lead Teacher or a maximum of 18 students with a Lead and a Teaching Assistant. *Staff to Child Ratio—1:8*

*All preschool classes are nine-month commitments and meet from 9am to 2:30pm.*

**Music and Movement** will be held weekly for all ages. This class will promote physical fitness and coordination as well as instill a love for music and knowledge of basic musical concepts. The teachers will use a variety of songs, musical instruments, games and equipment for this class.

**Lunch and Snacks** Each child should bring a healthy lunch and snack from home.



# TUITION

**Use your child's age as of September 1 of this school year for class choices.**

Class	Registration Fee	Monthly Tuition
<b>Toddlers (18-23 months)</b>		
Mon/Wed	\$250	\$295
Tues/Thurs	\$250	\$295
<b>Two-Year-Old</b>		
Mon/Wed	\$250	\$295
Tues/Thurs	\$250	\$295
<b>Three-Year-Olds</b>		
Mon/Wed	\$250	\$295
Tues/Thurs	\$250	\$295
Tues/Wed/Thurs	\$250	\$395
Mon-Thurs	\$250	\$465
<b>Four-Year-Olds</b>		
Tues/Thurs	\$250	\$295
Tues/Wed/Thurs	\$250	\$395
Mon-Thurs	\$250	\$465
<b>Transition Class (5-Year-Olds)</b>		
Mon-Thurs	\$250	\$465



# CURRICULUM

Our academic and Christ-centered curriculum is based on a well-rounded choice of unit/weekly themes that lend themselves to all areas of the curriculum: science, math, arts, language, pre-reading, music and motor experiences. Learning centers, individual, and group instruction time help enhance these themes.

The depth of learning is planned for each age level. We believe children are continually learning and will capitalize on "teachable moments." A low child-to-teacher ratio is maintained so we can provide each child with individual attention. Activities are planned to meet the children's needs and to stimulate developmental learning.

We encourage children to work and learn at their own pace realizing that children learn best through every day experiences with the people they love and trust, and when learning is fun!

**Christian Education** will be woven throughout the day. Children will pray before snack and lunch, during circle time and other times of the day. They will hear Bible stories and sing praise and worship songs. Children ages 2-5 years will attend a weekly chapel time. Bible themed books will be available for book centers and story times. Through Christian care, children will begin to learn and experience the love of God.

