



**Grace**  
Fellowship

**A**

**CHURCH**

**ON**

**MISSION**



## GRACE FELLOWSHIP CHURCH VISION AND MISSION

It is the **VISION** of Grace Fellowship Church to be a **HOUSE OF PRAYER FOR ALL NATIONS**.

It is the **MISSION** of Grace Fellowship Church to make disciples who make disciples. A disciple whose heart burns to...

- Become more like Jesus (The Great Exchange) (House)
- Love God (The Great Commandment) (Prayer)
- Love others (The Great Commission) (Nations)

Our **Missions Ministry** at Grace Fellowship seeks to glorify God in our local community and to the ends of the earth by praying, training, equipping, and mobilizing our resources to spread God's word and share the love of Jesus.

We also use every opportunity to raise the prayer temperature for our adopted unreached people groups (UPGs) so that Jesus will receive the worship He deserves from all peoples and nations!

### MISSIONS STAFF DIRECTORY (281-646-1903 x102)

**Kelley Kerr - Missions Pastor**

[kkerr@whatisgrace.org](mailto:kkerr@whatisgrace.org)

**Michael Farr - Local Missions Director**

[mfarr@whatisgrace.org](mailto:mfarr@whatisgrace.org)

**Amy Achgill - Global Engagement Director**

[aachgill@whatisgrace.org](mailto:aachgill@whatisgrace.org)

**Maria Bargraser - Missions Associate Director**

[mbargraser@whatisgrace.org](mailto:mbargraser@whatisgrace.org)



**Kelley Kerr**



**Michael Farr**



**Amy Achgill**



**Maria Bargraser**

**In your neighborhood.  
In your city.  
Around the world.**

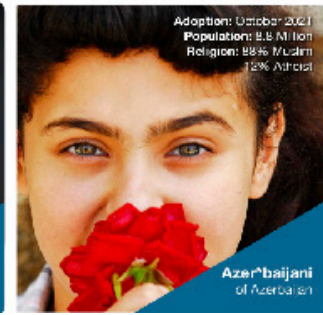
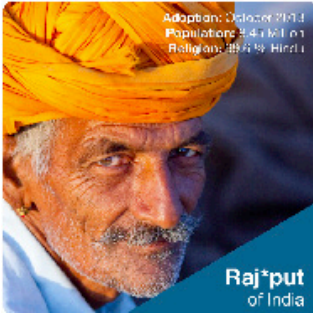


**How is the Holy Spirit moving you to  
put your faith into action?**

For more information, please email:

*[ChurchInAction@WhatIsGrace.org](mailto:ChurchInAction@WhatIsGrace.org)*

or go to [WhatIsGrace.org/Missions](http://WhatIsGrace.org/Missions)



## UPG PRAYER AND AI SET

Grace Fellowship has adopted six Unreached People Groups (UPGs), with a lifetime church goal of ten! We believe that the most effective way to fulfill our adoption commitment is to “raise the prayer temperature” for these precious people.

### You can get involved by:

- Join the **First Sunday UPG Prayer Group**, meeting 12:30pm every month, in the Prayer Center. The Harvest is plentiful, but the workers are few. Come pray to the Lord of the Harvest believing in the great, mighty, miraculous things He'll do among our UPGs. This group is family friendly.

**Contact** [aachgill@whatisgrace.org](mailto:aachgill@whatisgrace.org)

- Join the **International Audience of One Prayer Group** meeting every Thursday from 6-7 pm in The Great Southwest Prayer Center for worship and prayer in multiple languages for the nations and our adopted UPGs. Come and go as your schedule permits. You are also welcome to offer a prayer or song in your native language. No registration is needed.

**Contact** **Son** at [STo@WhatIsGrace.org](mailto:STo@WhatIsGrace.org)

- **Pray for our UPGs** using the prayer resources available at the Great Southwest Prayer Center and sign up to receive prayer prompts via text by scanning the QR code.





# Training & Equipping

## Spiritual Multiplication

Grow your passion for God and learn tools to share confidently with someone from any background in any situation. Don't limit yourself with "I'm uncomfortable, I'm not an evangelist, I don't know enough."

We will work through all of these barriers and fears, and you will be equipped to share the Good News! Come join us and let's make disciples! Find out more about:

- **Discovery Bible Study**
- **FriendSpeak**
- **PathWays**
- **Perspectives**
- **Missional training classes and events**



**Discovery Bible Study** (DBS) is a discipleship study enabling you to read the Bible and discover what it has to say to you. Simple, memorable questions allow you to

understand the character of God, encourage obedience and sharing with others.

Scripture-based study helping individuals discover their global purpose. Taught by various speakers, **PathWays** draws attention



to the thread woven throughout the Bible, from Genesis to Revelation, of God making himself known to all peoples. PathWays is a 12-week study designed to provide a flexible, small group-friendly format.



**Perspectives** is a 15-week course designed around four "perspectives" — Biblical, Historical, Cultural and Strategic, each highlighting different aspects of God's global

purpose. This course will help believers from all walks of life see how they can get threaded into God's story of redeeming people from every tribe, tongue, and nation to Himself.

## Faith Sharing

Put your faith into action to reach 1,000 neighbors for Christ! **Faith Sharing 101** opportunities will equip you with quick and easy ways for you to share your faith in your everyday lives. Look for programs throughout the year where we'll offer prayer walk and/or faith sharing opportunities for you to do it with a team of others who are committed to advancing the Great Commission. Questions? Contact Shannon at [Shannon@shannonstubblefield.com](mailto:Shannon@shannonstubblefield.com) or Shawn at [shawnlschroeder@gmail.com](mailto:shawnlschroeder@gmail.com).



## FriendSpeak

Reach out to international friends in a one-on-one setting reading the books of the Bible together with English conversations which allows time to build friendship and share Christ's love. You plant the seed by being their friend and God's Word works in their hearts. **Questions?** Contact Luke & Sarah Chong at [sarahkaty2000@yahoo.com](mailto:sarahkaty2000@yahoo.com)





## Community Outreach

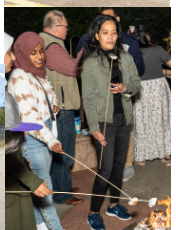
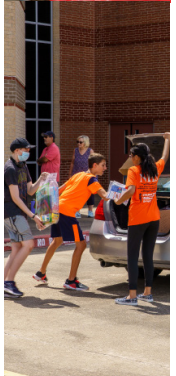
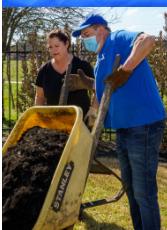
Come join us for some fun and great fellowship while providing tangible acts of love in our community!

Several times per month our volunteers take to the streets to help our local faith-based partners better meet their ministry needs or bless a family in need or even hold relational events for local and international outreach. These are structured serving opportunities, generally on a Saturday morning, where you can just “register and serve” and we’ll take care of all the project planning and organization.

Email [ChurchInAction@WhatsIsGrace.org](mailto:ChurchInAction@WhatsIsGrace.org) to be added to our monthly Missions E-newsletter distribution.

# Oct. 6, 2024 CHURCH has LEFT the BUILDING

Grace Fellowship closes its doors once every two years and sends thousands of our members out into the community to serve as the hands and feet of Jesus. Lives are touched with spiritual and tangible acts of love, grace and mercy. This day is all about serving God by serving others, and we pray that as the church doors are closed, hearts will be opened, and we will see the mighty works of God throughout Katy/West Houston.







# Garden of Grace

Rooted in love.

Feeding our community for the Kingdom.

A  
CHURCH  
THAT  
GROWS



[WhatsGrace.org/Missions](https://WhatsGrace.org/Missions)

Established in 2021, the **Garden of Grace** has provided more than 15 tons of fresh produce to underserved communities in Katy/West Houston. Staffed by a group of dedicated volunteers led by **Gregg & Stephanie Nady**, the Garden is located at the southeast corner of the Grace Fellowship Church campus.



Among the produce and plants grown in the garden are okra, eggplant, sweet potatoes, corn, beets, peanuts, tomatoes, sunflowers, winter melon, watermelon, cilantro, peppers, cucumbers, squash and a variety of other vegetables that thrive in the Katy climate. There is also a small grove of fruit trees that has been planted near the main garden.



## SCAN THE QR CODE TO SIGN UP

- ➔ Volunteers are needed! Garden crew workdays are every Tuesday, Thursday, and Saturday from 7:30-10:30 a.m. Come and go, as you are able.
- ➔ Also, let us know if you want to support our community garden in any other way too!

# Double Dog Dare



## Have you ever heard of our Double Dog Dare (DDD) program?

Well, it's easy to rise up and take the challenge! Just identify a need and meet that need! Any group of Grace Fellowship members or regular attenders can register a community service project of their choice. Submit your proposal to receive reimbursement for up to \$500 to complete your service project.



Be the Church and glorify Him by making a big difference in someone's life!

↩ Scan the QR code to apply!

---

---

## MISSIONS EQUIPMENT

We are blessed to be able to offer our Grace Fellowship members or regular attenders access to missions equipment for mission trips, to love on our neighbors, create or promote local evangelism opportunities, support community events or local ministry partner organizations, and/or facilitate small group community service projects. Equipment must be reserved and can only be used for ministry outreach purposes.



Missions' equipment includes a mission's truck equipped with a hauling package, open bed and enclosed cargo trailers, tool trailer (supports construction-based event) and a Block Party Trailer. The Block Party Trailer easily supports an event for 50+ people with picnic tables, serving tables, shade umbrellas, coolers, grill, griddle and shade canopies. We also have a prayer station, portable sound system, toddler bounce house, signage and many other items to make an outreach successful.

Scan the QR code to reserve equipment →







# THE WORLD AWAITS



## CROSS CULTURAL MISSION TRIPS

**Grace Fellowship mission trips mobilize worshippers of Jesus in every place we serve by...**

- **Meeting Spiritual Needs (share the Gospel)**
- **Meeting Physical Needs (help without hurting)**
- **Raising Prayer for our adopted UPGs**

For more information, please scan the QR Code or visit [WhatIsGrace.org/Mission-Trips](https://WhatIsGrace.org/Mission-Trips)





Unreached People Group

# Adoption

A

CHURCH

THAT

ADOPTS



# What is an Unreached People Group (UPG)?

It is estimated that of the 7.75 billion people alive in the world today, 3.23 billion of them live in unreached people groups with little or no access to the Gospel of Jesus Christ. According to Joshua Project, there are approximately 17,446 unique people groups in the world with 7,400+ of them considered unreached. That's over 41% of the world's population! The vast majority (85%) of these least reached groups exist in the 10/40 window and less than 10% of work is done among these people.



# What is the 10/40 Window?

The 10/40 Window is home to some of the largest unreached people groups in the world. It is the rectangular area of North Africa, the Middle East and Asia approximately between 10 degrees north and 40 degrees north latitude.



# What does it mean to adopt an Unreached People Group (UPG)?

At Grace Fellowship Church, adopting a UPG means standing in the gap on behalf of the people in that people group who do not have access to the lifesaving truth that Jesus is Lord and for the fieldworkers serving among our UPGs. We do this by praying, giving, going, serving, and learning in many ways.

**“I believe that God’s greatest purpose for Grace Fellowship is located outside of Katy. The nations needed a church to be birthed in Katy, TX that would not stop praying, giving, and going.”**

- Jim Leggett, Sr. Pastor

## When did we adopt our UPGs?

- 2004 - the Ban\*jar people of Indonesia
- 2010 - the Bug\*is people of Indonesia
- 2010 - the Makas\*ar people of Indonesia
- 2013 - the Raj\*put people of India
- 2021 - the A\*far people of Ethiopia
- 2021 - The Azer\*baijani people of Azerbaijan

## What is with the asterisks?

\*Asterisks are included for security purposes. We strive to do everything we can to keep our field workers safe as they live in their chosen areas.



**Adoption:** January 2004  
**Population:** 3 Million  
**Religion:** 99.9 % Muslim



## Ban\*jar of Indonesia

**Ban\*jar**—The Ban\*jar people are 99.9% Muslim with animistic beliefs and live primarily on the island of Borneo in Indonesia.


### **WHAT ARE THEIR LIVES LIKE?**

Banjarmasin has portions of the city below sea level, so the city rises and falls with the tides. Houses on stilts line the waterways through the city and flooding of homes is common. Small boats are used to travel around the rivers and canals where people bathe, wash laundry, and buy fruit, vegetables and fish from vendors in small canoes on floating markets. Most people farm or work on plantations. Some work in manual sawmills. Trade, transport and mining of coal, diamonds, and gold are other occupations. After Dutch colonialism, the Ban\*jar have been suspicious of education and send most children to Islamic schools.

### **PRAY FOR THE BAN\*JAR:**

**Lord, we ask that you will bless the Ban\*jar people, the people of the water. Protect their families from pollution and illness. We pray the Ban\*jar will know and experience Jesus, the only Living Water. Amen.**





**Adoption:** October 2010  
**Population:** 3.8 Million  
**Religion:** 99.79 % Muslim

## Bug\*is of Indonesia

**Bu\*gis**—The Bugis are dynamic, highly mobile Muslim people, considered to be the dominant people group on South Sulawesi Island. They are influenced by traditional animistic beliefs.

### **WHAT ARE THEIR LIVES LIKE?**

Most Bugis currently make their living by hunting, fishing, farming, raising livestock, or making handicrafts. During Dutch Colonization, the Bugis depended on the sea for survival and became pirates of merchant ships. Two of the most important cultural values for the Bugis are called siri (personal honor) and siri-pesse (communal honor). A Bugis person must defend, maintain and build one's own siri.

### **PRAY FOR THE BUG\*IS:**

**Lord, we bless the Bug\*is people and we are thankful that you love them and their families.** As people with a seafaring culture we pray that they will meet Jesus and navigate their lives toward the True North. **Amen.**



**Adoption:** October 2010  
**Population:** 2.2 Million  
**Religion:** 99.9 % Muslim

## Makas\*ar of Indonesia

**Makas\*asar**—The Mak\*asar are Muslim people with traditional animistic beliefs in ancestral spirits who live in Makassar, Indonesia on Sulawesi Island.

### **WHAT ARE THEIR LIVES LIKE?**

Rice farming is the primary source of income among the Mak\*asar. They are also known for their skill in trading and as fishermen. Some live in the large city of Makassar and many live on the plains as well as the beach. Like many groups in Indonesia, men are responsible for matters outside the house such as farming, working the plows and carrying rice bundles after the harvest. The household duties are assigned to women. Lack of medicine and nutrition education is often a problem in the rural areas.

### **PRAY FOR THE MAKAS\*AR:**

**Lord, we bless the Makas\*ar people.** We ask that these rice farmers, traders, and fishermen will be able to provide for and support their families well. We pray that they will one day be like the Fishers of Men who chose to follow Jesus and tell the Good News to others. **Amen.**





**Adoption:** October 2013  
**Population:** 8.45 Million  
**Religion:** 99.6 % Hindu

## Raj\*put of India

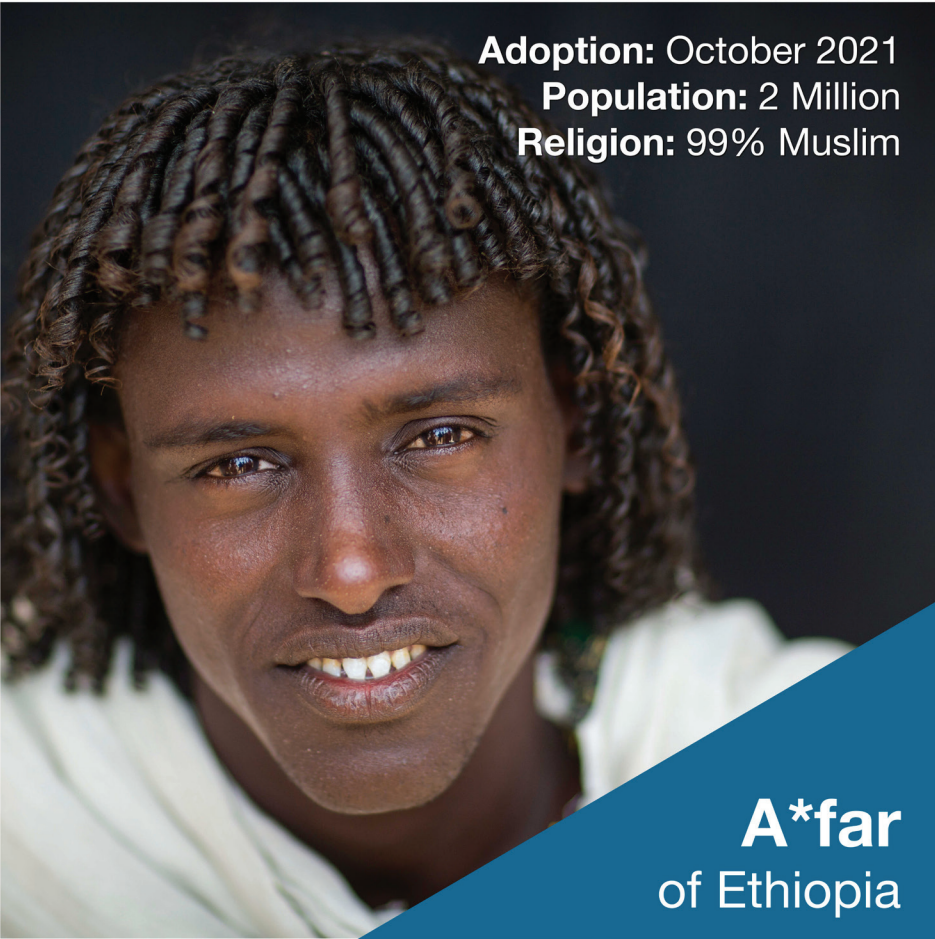
**Raj\*put**—There are approx. 8 million Raj\*put Hindus who live in Jaipur, India, in the state of Rajasthan. There are many more millions of Raj\*put in other locations.

### **WHAT ARE THEIR LIVES LIKE?**

In India, the Raj\*put are known as “the sons of kings” and have a privileged position in society. They are culturally, financially, and ideologically wealthy and help govern the society and politics of India. Around 800AD, Raj\*puts were the warriors who defended kingdoms from Muslim invaders. They were known for their courage and loyalty. The Raj\*put typically worship Shiva (the destroyer), Surya (the sun god), and Durga (the mother goddess). To find spiritual answers, Hindus often turn to gurus.

### **PRAY FOR THE RAJ\*PUT:**

**Lord, we bless the Raj\*put people and we praise you for the miraculous work you are already doing among them!** We pray that the Sons of Kings of India will meet Jesus and choose to walk in their true identity as sons and daughters of the King of all Kings. **Amen.**



**Adoption:** October 2021  
**Population:** 2 Million  
**Religion:** 99% Muslim

## A\*far of Ethiopia

Our adopted UPG #5, the A\*far of Ethiopia, represents 2 million people with only 500 known believers in Jesus Christ. We are trusting God for 100,000 souls among this people group.

**WHAT ARE THEIR LIVES LIKE?** Most of the A\*far herd sheep, goats, cattle, and camels. A man's wealth is measured by the size of his herds.

The A\*far live in camps surrounded by thorn barricades, which protect them from the attacks of wild animals or enemy tribesmen. Their oval-shaped huts, called ari, are made of palm mats and are easily moved.

The A\*far people live on the earth's hottest and driest spot, the Danakil Desert, which is nearly 400 feet below sea level with daytime temperatures averaging 122°F in the sun. The A\*far also mine for salt, living a nomadic family life.

**PRAY FOR THE A\*FAR:**

**Lord, we pray that you will bless the A\*far.** Give their families continued endurance from extreme heat. As they daily mine salt, we pray that one day they will be like salt and light; knowing and sharing the Good News of Jesus. **Amen.**





**Adoption:** October 2021  
**Population:** 8.8 Million  
**Religion:** 88% Muslim  
12% Atheist

## Azer\*baijani of Azerbaijan

Our adopted UPG #6, the Azer\*baijani, represent almost 9 million people in the country Azer\*baijan and over 30 million worldwide. Less than .5% are known believers in Jesus Christ. We are trusting God for 550,000 souls in their home country. Azer\*baijan is located in the Caucasus Mountain region on the western shore of the Caspian Sea. It is there, in the land of the ancient Medes, that we find more than eight million Azer\*baijanis.

**WHAT ARE THEIR LIVES LIKE?** Azer\*baijan is a low, fertile plateau located in the South Caucasus bordered by the Caspian Sea on the East and the Caucasus. The climate ranges from warm to sub-tropical temperatures. Grain, grapes, cattle, sheep, and goats are raised in abundance. Vegetables, fruits, and some teas are also important products. Although the land is ideal for farming, about one fourth of the population now lives in Baku, the nation's capital, working in industry.

**PRAY FOR THE AZER\*BAIJANI:** Lord, we bless the Azeri\*baijani people and ask for their families to have peace, health, hope, and joy. As they live in Azerbaijan, "the land of Fire", we pray the Azer\*baijani people will one day fully know You, the one true God, and be set ablaze with Your good news of hope and salvation. Amen.

# Connect with our Unreached People Group Adoption!



## PRAY

- Pray "Let the Ban\*jar, Makas\*ar, Bug\*is, Raj\*put, Af\*ar and Azer\*baijani know and follow Jesus."
- Scan the QR code below to receive UPG prayer request texts.
- Join us for testimonies and UPG prayer the first Sunday of every month at 12:30PM on the second floor of the Ministry Building.
- Join weekly or monthly Zoom international prayer calls with workers living among our UPGs.

## GIVE

- 20% of your tithes and offerings at Grace Fellowship Church goes towards missions work.
- Give sacrificially of your time, treasures, and skills for God's Kingdom expansion.

## LEARN

- Participate in a nations-focused discipleship class like Perspectives or PathWays.
- Join a Multiply Group to experience faith sharing and prayer together.
- Read "Across the Street and Around the World," by Jeannie Marie, with a friend or small group.

## GO

- Join us overseas on a UPG short-term mission trip.
- Ask God if He is calling your family to share the Good News with our UPGs long-term.
- Consider every international business trip as an assignment to bring the light of Jesus to the world.
- Share friendship, coffee and the gospel with international neighbors, classmates, or coworkers.
- Use Double Dog Dare (DDD) funds and the Block Party Trailer to host an international potluck in your neighborhood.

## SERVE

- Adopt a specific UPG together as a Grace Fellowship small group.
- Use your skills on our Global Team in the areas of strategy, and prayer, sending, member care or finances.
- Be a FriendSpeak partner and read God's Word with a new international friend.

Scan to receive  
UPG prayer  
request texts.



[WhatIsGrace.org/Missions](https://www.WhatIsGrace.org/Missions)

# LOCAL MISSIONS PARTNERS

Dear Church Family and Friends,

Grace Fellowship Church is so blessed and humbled to be part of an extensive network of faith partners who impactfully serve the Kingdom and our local community so well! Our current partners are listed alphabetically over the next several pages.

God's love, mercy and grace is their cornerstone for all they do to tangibly bless everyone they touch in the community. They offer assistance to those in need who are going through all of life's trials and tribulations.

Some examples include providing essential services to our under-resourced families, the situationally or chronically homeless, families torn apart by abuse or neglect, those suffering from chronic and terminal illness, refugees rebuilding their lives far away from family and their homeland, those trying to break free of addiction and/or trafficking and guiding young women and their families through the perils of unplanned pregnancy.... and so much more!

Through your love and gracious support, Grace Fellowship is able to make key investments in these ministry partners so that they may be the hands and feet of Jesus every day. We do this through in-kind donations, financial giving, and through our Church Has Left the Building (CHLB), Church in Action and Double Dog Dare community service programs.

Please come join us the next time we are out in the community supporting one of our fantastic ministry partners!

*"I was hungry and you gave me something to eat, I was thirsty and you gave me something to drink, I was a stranger and you invited me in."*

*Matthew 25:35*



## **ARC of Katy**

**Ministry Focus:** Special Needs

**Website:** [www.thearcofkaty.org](http://www.thearcofkaty.org)

**Address:** 934 Jordan Ranch Blvd., Brookshire 77423

**Phone:** 832-754-9802

**Contact/Email:** Cherie Duddridge / [info@thearcofkaty.org](mailto:info@thearcofkaty.org)

**Mission:** *To provide opportunities for individuals with intellectual and developmental disabilities that enable each person to be included as a respected and active member of their community throughout their lifetime.*

**Volunteer needs:** *Help provide opportunities and resources for youth or adults with intellectual and developmental disabilities and their families.*



## **The Ballard House**

**Ministry Focus:** Hospitality House for Life Threatening Illnesses

**Website:** [www.theballardhouse.org](http://www.theballardhouse.org)

**Address:** 21421 Cinco Park Rd, Katy 77450

**Phone:** 281-717-4670

**Contact/Email:** Dave Brown / [dave.brown@ballardhouse.org](mailto:dave.brown@ballardhouse.org)

**Mission:** *To provide temporary housing in our community with a warm, safe environment for individuals and their families who are hospitalized or receiving treatment for a serious medical condition.*

**Volunteer needs:** *Welcome guests, do light cleaning, yard work, pantry parties, prepare dinner, and many other helpful activities... just be a friendly face!*





## **Boaz House Women's Recovery**

**Ministry Focus:** Homeless and Recovery

**Website:** [www.theboazhouse.com](http://www.theboazhouse.com)

**Address:** 4327 4th Street, Brookshire 77423

**Phone:** 713-205-1136

**Contact/Email:** Christina Boaz / [theboazhousecbw@gmail.com](mailto:theboazhousecbw@gmail.com)

**Mission:** *The Boaz House is a six month faith-based women's rehab facility. We help women find restoration in learning to rely on the Holy Spirit along with working a thorough recovery program.*

**Volunteer needs:** *We welcome individuals and groups to volunteer and offer a range of opportunities to help grow and better the ministry.*



## **Boys and Girls Country**

**Ministry Focus:** Children and Youth

**Website:** [www.boysandgirlscountry.org](http://www.boysandgirlscountry.org)

**Address:** 18806 Roberts Rd, Hockley 77447

**Phone:** 281-290-1288

**Contact/Email:** Shannon Smith / [info@boysandgirlscountry.org](mailto:info@boysandgirlscountry.org)

**Mission:** *To change the lives of children from families in crisis by loving and nurturing them in a Christian home environment, raising them to become self-sustaining and contributing adults.*

**Volunteer needs:** *From tutoring in a cottage to teaching our kids how to bake cupcakes or play the guitar, to helping our families deep clean, volunteers are part of our family and help us raise our children.*



## **Bridges International**

**Ministry Focus:** International Students

**Website:** [www.houstonbridges.com](http://www.houstonbridges.com)

**Address:** N/A

**Phone:** 281-979-2771

**Contact/Email:** Nate Pennings / [nate.pennings@bridgesinternational.com](mailto:nate.pennings@bridgesinternational.com)

**Mission:** *We are committed to serving, promoting social connections and engaging in spiritual conversations with international students so that students become leaders internationally!*

**Volunteer needs:** *We host events throughout the year and need volunteers to show God's love and the hospitality of his people to students from around the world.*



## **Christ Clinic**

**Ministry Focus:** Medical Care

**Website:** [www.christclinickaty.org](http://www.christclinickaty.org)

**Address:** 25722 Kingsland Blvd., Suite 111, Katy 77494

**Phone:** 281-391-0190

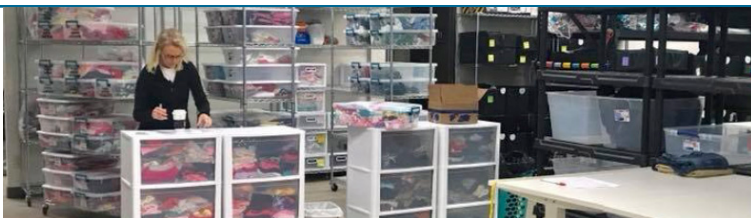
**Contact/Email:** Michelle Shelton / [michelle@christclinickaty.org](mailto:michelle@christclinickaty.org)

**Mission:** *Christ Clinic's goal is to bridge the gap between health inequities and lasting wellness for the uninsured and underinsured in our community.*

**Volunteer needs:** *General Office Support, Medical Assistants, Spanish/English Interpreters, Volunteer Physicians*



Clothed By Faith



## Clothed by Faith

**Ministry Focus:** Clothing for those in need

**Website:** [www.clothedbyfaith.org](http://www.clothedbyfaith.org)

**Address:** 802 Dominion Dr., Suite 100-300, Katy 77450

**Phone:** 281-676-8837

**Contact/Email:** Melinda Stephenson / [info@clothedbyfaith.org](mailto:info@clothedbyfaith.org)

**Mission:** *Demonstrate God's love by providing gently-used clothing to those in need.*

**Volunteer needs:** *Work in the warehouse, sorting, sizing, folding and doing inventory; providing pick-ups and/or deliveries; work at home helping with laundry and organizing packages.*



## Compassion Katy

**Ministry Focus:** Under-resourced in Katy ISD

**Website:** [www.compassionkaty.org](http://www.compassionkaty.org)

**Address:** 802 Dominion Dr., Suite 900A, Katy 77450

**Phone:** 281-395-1130

**Contact/Email:** Bobit Santos / [info@compassionkaty.org](mailto:info@compassionkaty.org)

**Mission:** *To understand circumstances and meet tangible needs to bridge gaps for the under-resourced in the Katy ISD community through collective partnerships, engaging and activating people and organizations to alleviate hardship, elevating hearts, minds and spirits, and empowering people to move forward with purpose and hope.*

**Volunteer needs:** *Participate in Christmas blessings, Operation Back2School, Shoe Drive and/or sponsor a child.*





## **Elijah Rising / Kendleton Farms**

**Ministry Focus:** Human Trafficking

**Website:** [www.elijahrising.org](http://www.elijahrising.org)

**Address:** 402 Teetshorn, Houston 77009

**Phone:** 832-628-3439

**Contact/Email:** Micah Gamboa / [admin@elijahrising.org](mailto:admin@elijahrising.org)

**Mission:** *To end sex trafficking through prayer, awareness, intervention, and restoration.*

**Volunteer needs:** *Many volunteer opportunities at various capacities. No matter your skill set we provide ways for you to connect with other volunteers to fight sex trafficking.*



## **Eyes on Me / The Hangar Unity Center**

**Ministry Focus:** At-Risk Children

**Website:** [www.thehangarbrookshire.com](http://www.thehangarbrookshire.com)

**Address:** 4010 4th Street, Brookshire 77423

**Phone:** 832-208-2772

**Contact/Email:** Casandra / [thehangarbrookshire@icloud.com](mailto:thehangarbrookshire@icloud.com)

**Mission:** *To meet the community's various needs on their level achieving community transformation.*

**Volunteer needs:** *Provide transportation, be a mentor, help in the office, teach life skills and/or trades, prison outreach, hip hop hope, assist in school assemblies.*



FEED THE  
HUNGER



## Feed the Hunger

**Ministry Focus:** Food for the hungry

**Website:** [www.feedthehunger.org](http://www.feedthehunger.org)

**Address:** P.O. Box 2347, Burlington, North Carolina 27216

**Phone:** 314-504-5610

**Contact/Email:** Regina Alexander / [regina@feedthehunger.org](mailto:regina@feedthehunger.org)

**Mission:** *Feed the spiritual and physical hunger in the needy.*

**Volunteer needs:** *Serve in one of the local Packathons; help provide Bibles and other educational materials; prayer; travel to communities served by FTH*



## Fort Bend Ramps

**Ministry Focus:** Ramps for the mobility impaired

**Website:** [www.fortbendramps.org](http://www.fortbendramps.org)

**Address:** 519 Grand Fir Ln., Richmond 77469

**Phone:** 713-927-8947

**Contact/Email:** Les Bynum / [lbynum@fortbendramps.org](mailto:lbynum@fortbendramps.org)

**Mission:** *Assist people with mobility issues by building ramps for them to have access to their homes. Fort Bend Ramps is dedicated to providing these ramps at no cost to those who cannot afford to add this luxury to their home.*

**Volunteer needs:** *Building ramps with a team.*



## Freedom Church Alliance

**Ministry Focus:** Human Trafficking

**Website:** [www.freedomchurchalliance.org](http://www.freedomchurchalliance.org)

**Address:** 7941 Katy Freeway #734, Houston 77024

**Phone:** 713-906-6161

**Contact/Email:** Leigh Kohler / [leigh@freedomchurchalliance.org](mailto:leigh@freedomchurchalliance.org)

**Mission:** *Engaging the church as a unified, collaborative body to make a greater impact in the anti-human trafficking movement. We are here to see the oppressed and exploited rescued, redeemed, and healed by the grace and power of God.*

**Volunteer needs:** *Pray, Learn, Serve and Give opportunities available.*



## FriendsSpeak

**Ministry Focus:** International community outreach

**Website:** [www.friendspeak.net](http://www.friendspeak.net)

**Address:** N/A

**Phone:** 713-504-5610

**Contact/Email:** Luke & Sarah Chong / [sarahkaty2000@yahoo.com](mailto:sarahkaty2000@yahoo.com)

**Mission:** *To create life-changing conversations around the world and across the street.*

**Volunteer needs:** *Spend an hour a week engaging in life-changing conversations with international friends in your community, helping them practice their English.*



## Hope Impacts

**Ministry Focus:** Serving the homeless

**Website:** [www.hopeimpacts.org](http://www.hopeimpacts.org)

**Address:** 802 Dominion Dr., Suite 900, Katy 77450

**Phone:** 713-705-7884

**Contact/Email:** Tina Hatcher / [tina@hopeimpacts.org](mailto:tina@hopeimpacts.org)

**Mission:** *Provide hope and dignity to those facing homelessness.*

**Volunteer needs:** *Sponsor meals and office help.*



## Houston Welcomes Refugees

**Ministry Focus:** Refugee resettlement

**Website:** [www.houstonwelcomesrefugees.com](http://www.houstonwelcomesrefugees.com)

**Address:** 946 W. 17th St., Houston 77008

**Phone:** none

**Contact/Email:** Bekah Gilmore / [info@houstonwelcomesrefugees.com](mailto:info@houstonwelcomesrefugees.com)

**Mission:** *Mobilizing our city to welcome refugees with compassion, hope, and honor as they resettle and start a new life in Houston.*

**Volunteer needs:** *Many volunteer opportunities are available to help welcome refugees arriving in the U.S. including serving on a move-in team, a welcome team, and providing welcome kits.*



WHERE HOPE IS AT HOME

# Katy Cares

**Ministry Focus:** Single-parent families

**Website:** [www.katycares.org](http://www.katycares.org)

**Address:** 6725 S Fry Road Ste 700-507, Katy 77494

**Phone:** 832-517-1636

**Contact/Email:** Dawid J. Pieterse / [president@katycares.org](mailto:president@katycares.org)

**Mission:** *To equip single-parent families with the necessary social, emotional and parental skill sets that can enable them to become emotionally resilient, socially independent and competent to engage meaningfully with society.*

**Volunteer needs:** *Provide transportation, assist in parenting program, be a mentor, teach life skills, maintenance and home improvement.*



# Katy Christian Ministries

**Ministry Focus:** Social services

**Website:** [www.ktcm.org](http://www.ktcm.org)

**Address:** 3506 Porter Rd., Katy 77493

**Phone:** 281-391-5261

**Contact/Email:** Diana Miller / [volunteer.adm1@ktcm.org](mailto:volunteer.adm1@ktcm.org)

**Mission:** *Transforming lives through God's grace and the generosity of the community.*

**Volunteer needs:** *Serve in resale shops, food pantry, social services, administration, crisis center, community garden or special events.*





## **Katy Responds**

**Ministry Focus:** Disaster relief

**Website:** [www.katyresponds.org](http://www.katyresponds.org)

**Address:** 22765 Westheimer Pkwy., Katy 77450

**Phone:** 281-305-8545

**Contact/Email:** Chris Ajamiseba / [volunteer@katyresponds.org](mailto:volunteer@katyresponds.org)

**Mission:** *To ensure that no family is left in unlivable conditions by providing restoration for families to move past their unfortunate circumstances and give them renewed hope through reconstruction.*

**Volunteer needs:** *Painting, demolition, landscaping, construction and fencing.*



Keturah's  
Haven



## **Keturah's Haven**

**Ministry Focus:** Homeless pregnant women

**Website:** [www.keturahshaven.org](http://www.keturahshaven.org)

**Address:** P.O. Box 5261, Katy 77491

**Phone:** 832-244-0657

**Contact/Email:** David Rylander / [david@keturahshaven.org](mailto:david@keturahshaven.org)

**Mission:** *Break the chain of generational poverty and hopelessness by providing women in crisis pregnancies a loving, structured environment as well as the necessary resources and support for them and their children to become productive, well-balanced and contributing citizens.*

**Volunteer needs:** *Provide transportation, counseling, teach life skills, organize welcome baskets.*



## Manna House

**Ministry Focus:** Addiction recovery for men

**Website:** [www.mannahousetx.com](http://www.mannahousetx.com)

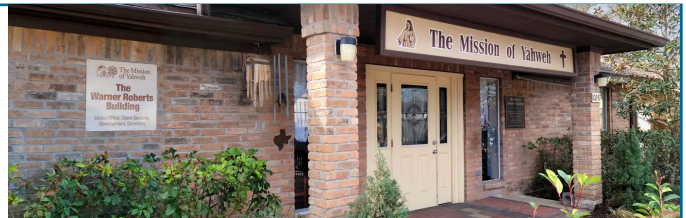
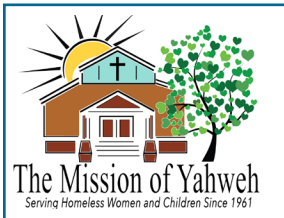
**Address:** 1234 FM 359 North, Brookshire 77423

**Phone:** 281-375-8864

**Contact/Email:** Bob Mersmann / [bobmersmann@gmail.com](mailto:bobmersmann@gmail.com)

**Mission:** *Helping men get free from addictions through practical, clinical, and biblical recovery curriculum and by introducing them to a relationship with Jesus Christ.*

**Volunteer needs:** *Contribute directly to the total restoration of the Manna House men. Come and work on campus upkeep, construction projects, initiatives benefitting our on-site businesses and garden, or at special events. We always welcome an extra pair of hands.*



## Mission of Yahweh

**Ministry Focus:** Homeless women and children

**Website:** [www.missionofyahweh.org](http://www.missionofyahweh.org)

**Address:** 10247 Algiers Road, Houston 77041

**Phone:** 713-466-4785 x107

**Contact/Email:** Courtney Khorrami / [courtney.khorrami@missionofyahweh.org](mailto:courtney.khorrami@missionofyahweh.org)

**Mission:** *A faith-based shelter that empowers, enriches and restores the lives of homeless women and children, and provides outreach services to communities in need, since 1961.*

**Volunteer needs:** *Work in the House of Hope, read to children, office data entry, help prepare meals, sort clothing/donations for the Resale Shop, food drive, painting and light construction.*





## **Neighborhood Kidz Club**

**Ministry Focus:** Children and youth

**Website:** [www.neighborhoodkidzclub.com](http://www.neighborhoodkidzclub.com)

**Address:** 3239 Randy Lane, Katy 77449

**Phone:** 713-826-2881

**Contact/Email:** Peggy Norwood / [info@neighborhoodkidzclub.org](mailto:info@neighborhoodkidzclub.org)

**Mission:** *To make a difference in the lives of children, youth, and families in local communities by addressing practical, spiritual, academic, and social needs.*

**Volunteer needs:** *Spend time with and work with children as a Bible teacher, homework helper, mentor and/or provide supplies and resources or give financially.*



## **Pregnancy Help Center**

**Ministry Focus:** Pregnant women

**Website:** [www.phckaty.org](http://www.phckaty.org)

**Address:** 1450 E Summitry Circle, Katy 77449

**Phone:** 281-578-0078

**Contact/Email:** Kelli McAnally / [info@phckaty.org](mailto:info@phckaty.org)

**Mission:** *To offer pregnancy services, resources and life-giving solutions for a mother to take the next step in her journey, completely free of charge, with support and education.*

**Volunteer needs:** *Be a client advocate, office volunteer, medical volunteer, provide resources, be a monthly donor or translator.*



## **Prestige Learning Institute**

**Ministry Focus:** Empowering immigrant and refugee families

**Website:** [www.prestigeinstitute.org](http://www.prestigeinstitute.org)

**Address:** 6565 Rookin St., Houston 77074

**Phone:** 713-969-8906

**Contact/Email:** Mina Mumbower / [info@prestigeinstitute.org](mailto:info@prestigeinstitute.org)

**Mission:** *To glorify God by educating, equipping and ministering to immigrant and refugee families, empowering them to thrive in the U.S.*

**Volunteer needs:** *Utilize your gifts and talents in many ways that add value to the community through prayer, financial donations, and/or engaging directly with women, men and children teaching, mentoring or serving.*



## **West Houston Young Life**

**Ministry Focus:** Youth evangelism

**Website:** [www.westhouston.younglife.org](http://www.westhouston.younglife.org)

**Address:** 423 Mason Park Blvd., Ste. B1, Katy 77450

**Phone:** 972-822-5179

**Contact/Email:** Lou Gil / [lou.gil@icloud.com](mailto:lou.gil@icloud.com)

**Mission:** *Inviting every kid to experience life as God designed it to be lived.*

**Volunteer needs:** *Host an event, volunteer to serve as a caring adult in a young person's life.*

**EAST WEST**



## **East-West Ministries/Arise**

**Ministry Focus:** Equipping and catalyzing disciples who make disciples.

**Website:** [www.eastwest.org](http://www.eastwest.org)

**Address:** 2001 West Plano Parkway, Ste. 3000, Plano, TX 75075

**Phone:** 281-635-6533

**Contact/Email:** Shannon Stubblefield / [shannon.stubblefield@eastwest.org](mailto:shannon.stubblefield@eastwest.org)

**Mission:** *Mobilize the Body of Christ to evangelize the lost and equip local believers to multiply disciples and churches among the unreached.*

**Volunteer needs:** *People who want to engage in the Great Commandment and Great Commission - locally and/or to the ends of the earth - to share their faith and God's testimonies.*



## **Global Gates**

**Ministry Focus:** Unreached People Group Communities in North America

**Website:** [www.globalgates.info/gateway-city/houston](http://www.globalgates.info/gateway-city/houston)

**Address:** 236 W 72nd St., New York, NY 10023

**Phone:** 917-243-4979

**Contact/Email:** [info@globalgates.info](mailto:info@globalgates.info)

**Mission:** *To see gospel transformation of the world's most un-evangelized people groups who have come to global gateway cities, and through them reach their communities around the world.*

**Volunteer needs:** *Prayer walk, share the gospel, distribute gospel materials, teach English and engage in conversations in unreached people group communities (training provided).*



[whatisgrace.org/missions](https://whatisgrace.org/missions)  
[MissionsMinistry@WhatIsGrace.org](mailto:MissionsMinistry@WhatIsGrace.org)